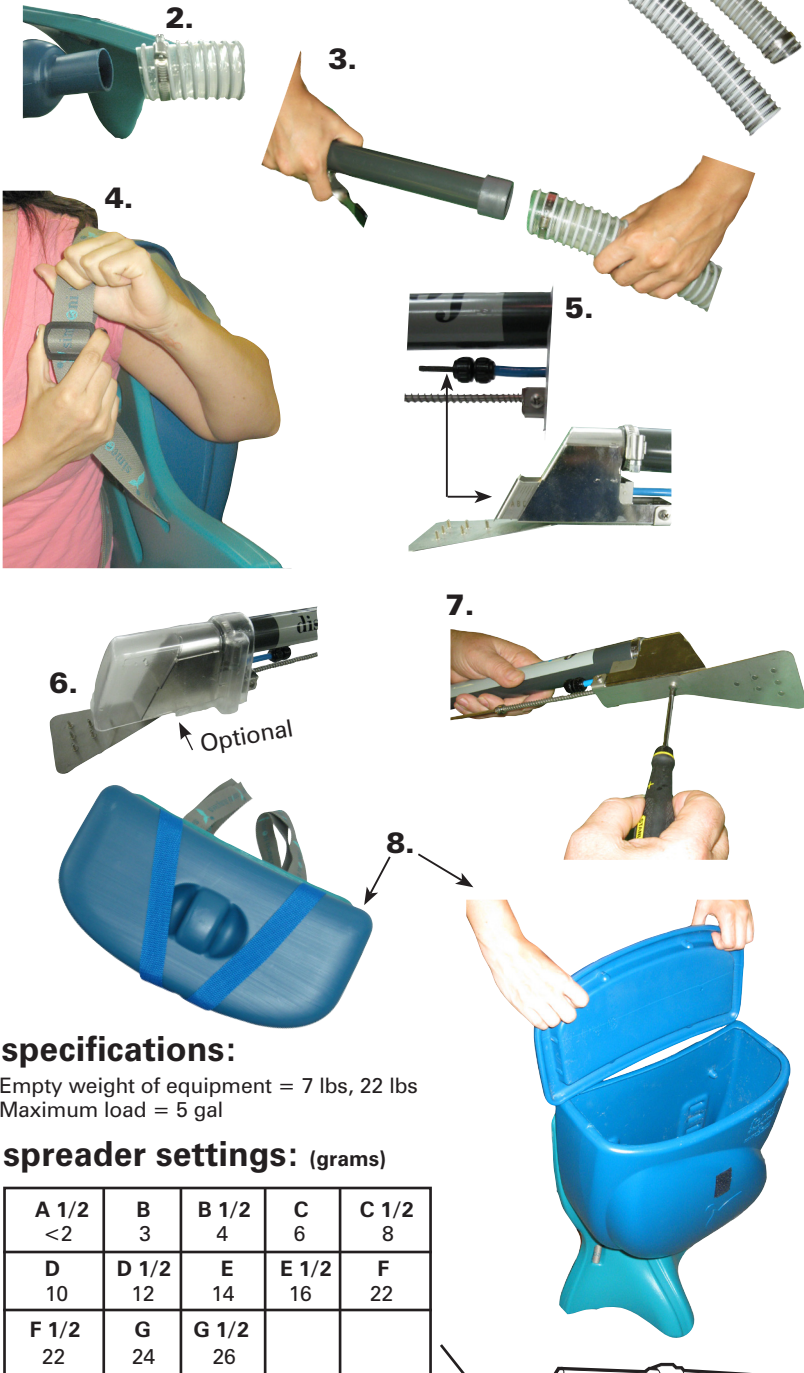


fertil dispenser

ASSEMBLING AND USAGE INSTRUCTIONS FOR FERTIL™ DISPENSER



Instructions:

1. Two different length hoses are provided. Choose the hose that is appropriate for the operator's height.
2. Insert the end of the flexible hose around the outside of the union of the tank by using a pushing and rotating motion in a clockwise direction. Secure with hose clamp.
3. Insert flexible hose around the outside of the ringlet of the wand by using a pushing and rotating motion in a clockwise direction. Secure with hose clamp.
4. Adjust the straps in relation to the operator's height. To reposition the straps at the top of the tank, remove the stop peg from the bottom strap attachment, slide strap out and remove from clip. Reposition the strap at the top as desired, then re-insert strap in clip and re-thread the strap at the bottom with the stop peg.

Dispensing Products:

5. The amount of granular product to be dispensed can be controlled by the two black knobs on the blue threaded rod. (Figure 5) These black knobs can be screwed upwards and downwards on the blue threaded rod.

a) The further up the rod the black knobs are turned, the larger the dispenser opening gets and a larger amount of product is dispensed. The further the black knobs are turned down the rod, the smaller the opening and a lesser amount of product is dispensed. These black knobs need to be used in conjunction with each other. The top knob is used to determine the dispensing level and the second knob locks the top knob into place for accurate product dispensing.

b) To adjust trigger tension adjust set screws and spring on the push rod. (Brackets not in picture)

Included Accessories:

6. **Dispenser Head Cover** protects the dispensed product from moisture. This accessory conveniently snaps on over the dispenser head.
7. The **Spreading Paddle** distributes applied products so that they are spread more evenly. It is easily secured in place by the three screws that are provided.

Filling the Tank:

8. The tank is designed to sit upright on a level surface. You can fill it with your chosen product, and then place the lid on top and close it with the hook and loop fastener strap.

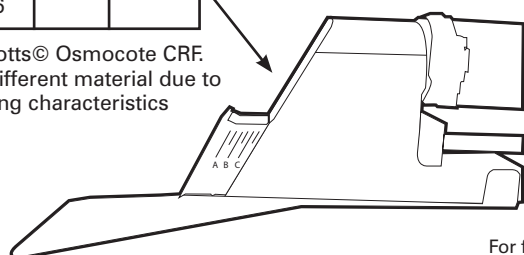
specifications:

Empty weight of equipment = 7 lbs, 22 lbs
Maximum load = 5 gal

spreader settings: (grams)

A 1/2 <2	B 3	B 1/2 4	C 6	C 1/2 8
D 10	D 1/2 12	E 14	E 1/2 16	F 22
F 1/2 22	G 24	G 1/2 26		

* Results based on Scotts® Osmocote CRF. Results may vary for different material due to their density and flowing characteristics



 **Phytotronics, Inc.**

13688 Rider Trail North
Earth City, MO 63045
(314) 770-0717 | Fax: (314) 506-4587

For further information please contact us at the address and phone number above:
sales@phytotronics.com | www.phytotronics.com